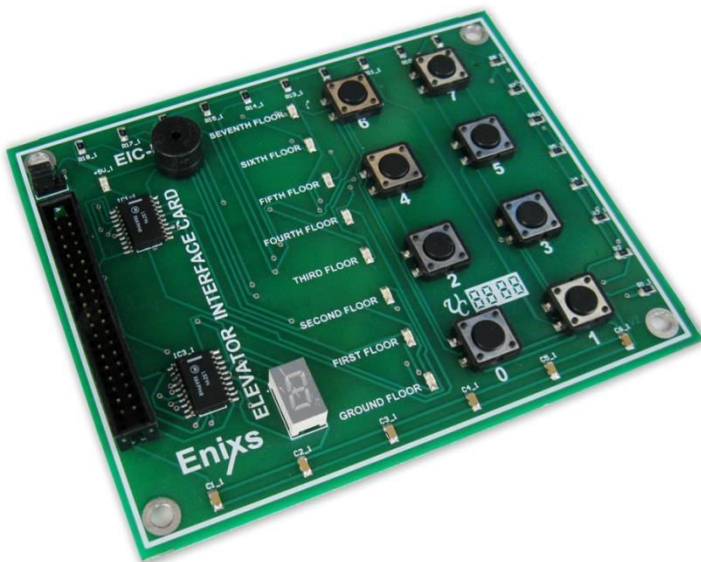


# ELEVATOR INTERFACE CARD EIC - I

## Introduction

The Elevator interface card is designed to demonstrate the elevator (Lift) operation of eight floors. It has the Input Output devices, which illustrates the floor selection and the selected floors can be represented by Segment display and Buzzer in the trouble-free way .It is one of the ideal design modules of elevator.



## Board Specification

- Operating voltage 5V & 3.3V
- Piezo buzzer
- Segment Display
- Eight Push buttons
- Eight LEDs
- 40 pin GPIO connector
- Compatible to interface with Embedded & FPGA boards

## Compatible Interface

- FC-01 FPGA Development Board.
- CM-01 CPLD Development board.
- EM-03 Embedded Development Board NXP-89V51RD2.
- EM-04 Embedded Development Board ARM-LPC2148.
- EM-05 Embedded Development Board PIC-16F877A.

