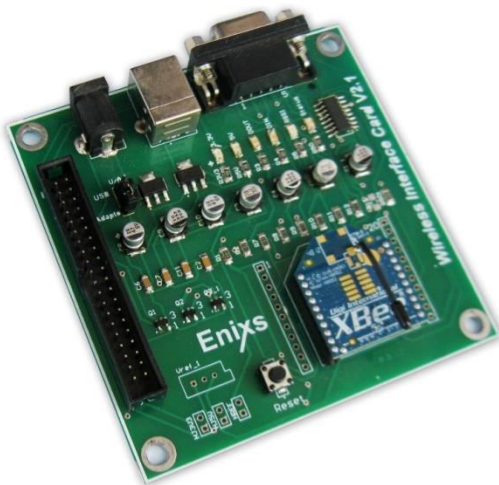


# WIRELESS INTERFACE CARD WIC II

## Introduction

The wireless interface card is the low power wireless sensor networks. The Xbee modems are one of the easiest ways to create a wireless point - to - point or mesh network. It has on board 3.3V low drop voltage regulator and LED indicators for reception, transmission status and activity of RSSI and power indication. It is compatible to work as the modem for Embedded and FPGA development boards. It is the basic wireless sensor module for implementing the wireless control projects.



## Board Specification

- Digi ZigBee/ZigBee Pro compatible RF modules
- Power up provision: Power Adaptor & USB Cable
- LED indications for Activity of RSSI Status of transmission ,reception, Power
- On board 3.3V low drop voltage regulator for power to the Xbee wireless module
- Receptacle socket to make the Connections to all pins of the ZigBee wireless module
- One RS 232 connector for Serial communication
- Reliable data communication between devices
- Operating frequency band is ISM 2.4 GHz
- It transmits the data up to 300ft(Clear line of sight) for ZigBee

## Chip Specification

- ZigBee/ZigBee Pro compatible RF modules.
- High interoperability with other digi products like gateways, device adapters and extenders
- Available series: Series 1 and Series 2
- Networking topologies: Point to multipoint or Mesh topologies
- Multiple antenna options: Chip,wire,whip,FL,RPSMA
- API or AI commands are followed in the configuration method
- Eight digital Input /Output lines
- 10 bit ADC